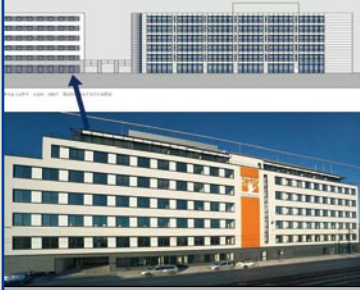


Energie Office



Nürnberg – St. Peter
Bahnhofstraße / Flaschenhofstraße

- Büroobjekt
Office Property
- Vermietung / Verkauf
Letting / Sale

Grundstücksgröße
Plot size ca. 1.000 m²

Neubau
New Building ca. 5.000 m²

Baustart
Start of constr. nach Vereinbarung
by arrangement

Stellplätze
Parking spaces ca. 118 TG + 15 Innenhof
about 118 undergr. parking
+ 15 inner yard

Verfügbar ab
Available from nach Vereinbarung
by arrangement

Beschreibung

Der erste Bauabschnitt ist bereits an Cortal Consors SA vermietet. Das im östlichen zweiten Bauabschnitt geplante Bürohaus wird durch seine exponierte Lage den repräsentativen Eingang zum gesamten Quartier bilden. Bei der Gestaltung wird besonderer Wert auf funktionelle Teilbarkeit und eine moderne sowie energieeffiziente Ausstattung gelegt.

Description

The first construction phase is already let to Cortal Consors SA. The new planned office building will be the representative entry to the whole area because of its exposed position. We will set the great value upon functional divisibility and modern equipment with high energy efficiency.



+49 (0)911 99259-66

claus.schoener@s-group.eu

www.s-group.eu
www.tenbrinke.com

Herr Claus Schöner

N U R E M B E R G

Extract from the publication 'Office and Commercial real estate'

Location for office and administrative use

Business Location Nuremberg

- ➔ Nuremberg, a modern city with half a million inhabitants, is the economic and cultural center in the Metropolitan Region
- ➔ International airport with direct connections to all major European economic centers
- ➔ Excellent transport connections: situated on the junction of the European highway network and on the railway-intersection of ICE and international longdistance lines
- ➔ One of the most attractive city centers in Germany with aboveaverage level of central shopping and arthistorical attractions
- ➔ Attractive destination for urban tourism with over 2 million overnight stays a year

For more information on the business location Nuremberg please contact:

City of Nuremberg, Office for Economic Development

Theresienstraße 9, 90403 Nürnberg

+49 (0)911 231-5792 or 6257

+49 (0)911 231-2762

economy@stadt.nuernberg.de

www.economy.nuremberg.de