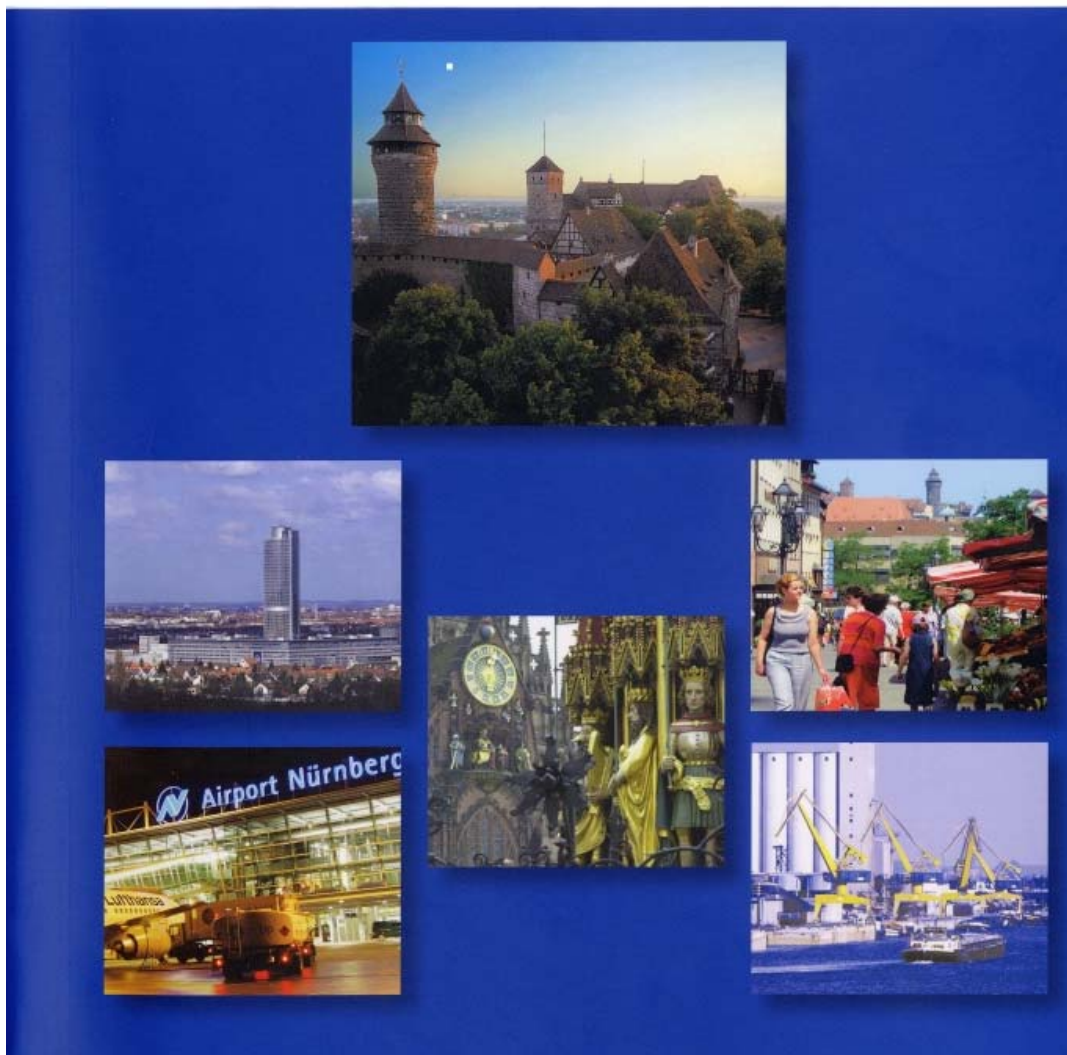


N Ü R N B E R G

Investition Zukunft

Key Data for Investors



Stadt Nürnberg Bernd Schostok: key-data.doc

Version:
February 2012

English 

City of Nuremberg
DEPARTMENT FOR ECONOMIC AFFAIRS



Table of contents

1. Basic data	3
2. Location	4
3. Transport connections	5
4. Trade fairs and congresses.....	6
5. Commercial sites / commercial areas	7
6. Retail trade sales indices	8
7. Labor market	9
8. Higher education establishments.....	12
9. Companies in Nuremberg.....	14
10. Costs, charges and taxes in Nuremberg.....	15
11. Gross domestic product at market prices	16
12. Economic structure.....	17
13. “Soft” location factors	22
Brief profile of Nuremberg economic region	23
Services offered by the Office for Economic Development	24
Index	25

1. Basic data

Inhabitants			Ref. date
City of Nuremberg	508 940		09/2011
Nuremberg conurbation (industrial region of Central Franconia)	1 307 704		09/2011
Nuremberg economic region (Central Franconia)	1 717 670		09/2011
Nuremberg metropolitan region	3.5 Mio.		
Gross domestic product			
City of Nuremberg	22.3 Mrd. €		2009
Nuremberg economic region	57.1 Mrd. €		2009
Nuremberg metropolitan region	105.7 Mrd. €		2009
Gross domestic product per employed person			
City of Nuremberg	59 931 €		2009
Nuremberg economic region	60 961 €		2009
Export quota of metropolitan region	42%		
Working population (City of Nuremberg)			
	372 800		2009
including in manufacturing sector	72 400		2009
including in service sector	298 500		2009
Working population (metropolitan region)	1 800 000		
Unemployed January 2012			
in Nuremberg District Employment Office	35 981	5,5%	01/2012
National insurance contributors			
City of Nuremberg	270 750		06/2011
Nuremberg metropolitan region	1 285 390		06/2011
Self-employed (City of Nuremberg)	30,800; equates to 8.3 % of the working population; incl. 86 % in the service sector		2009
Commuters (national insurance contributors)	140 957		2010
Remainder of commuters	91 441		2010

2. Location

German state: Bavaria

Administrative district: Central Franconia

Geographic location (city center):

latitude 49 degrees 27 minutes 10 seconds north

longitude 11 degrees 4 minutes 40 seconds east

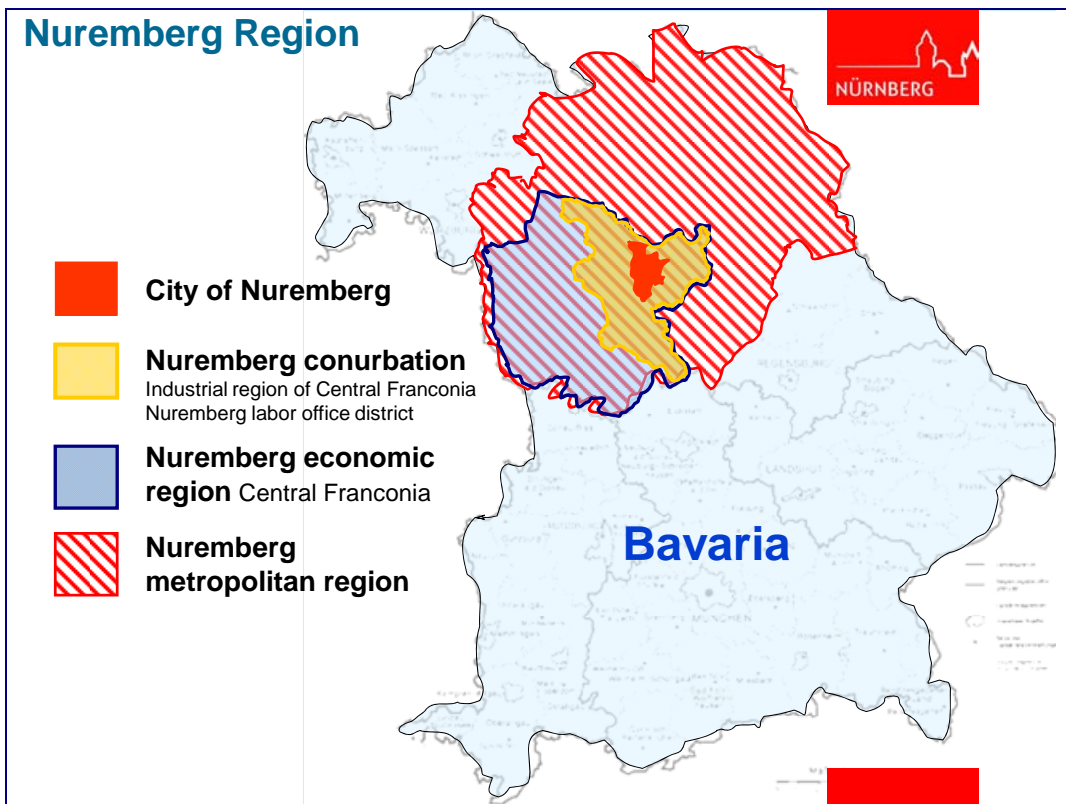
Altitude: 284-407 m above sea level

Local authority code

0956 4000

Urban area

186.38 km²



3. Transport connections



Motorways

Nuremberg is positioned at the intersection of the Paris-Prague, London-Brussels-Vienna-Budapest and Warsaw-Berlin-Rome motorways.

(A3, A6, A9, A73)

There are 14 motorway slip roads in the urban area.

Major roads

B2, B4, B8, B13, B14

Airport

Nuremberg airport

International airport with about 4 million passengers a year.

More than 60 destinations non-stop in 20 countries.

Close to the city: Can be reached directly from the city center by subway in approx. 12 minutes. The journey by car takes around 15 minutes.

Short check-in times and high-quality service.

The airport is the economic basis for 10,000 jobs in the region

Waterway

Main-Danube Canal offers waterway connection to the North Sea and Black Sea; biggest freight transport center in Southern Germany at the port; trimodal containerterminal road-railway-water

Rail connections

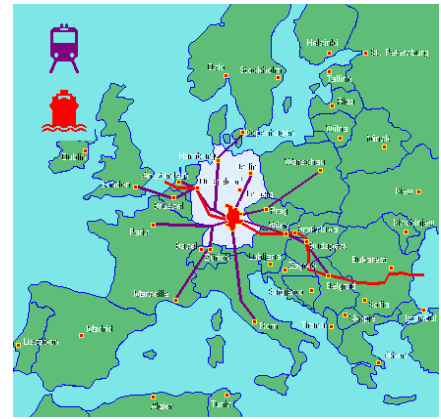
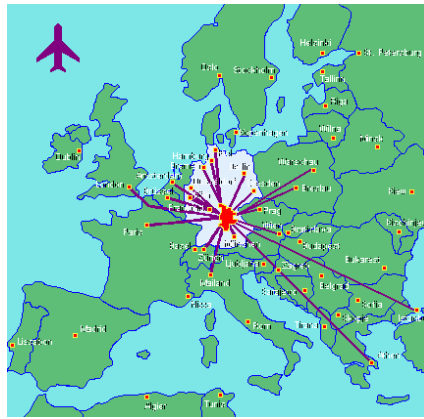
Rail junction for EC, IC, ICE

Local public transport

Center of the second largest integrated local transport system in Germany (14,024 km²; 200 million passengers / year).

Inner-city traffic

Total length of road network 1,146 km; 527 vehicles per 1,000 inhabitants



4. Trade fairs and congresses

Trade fairs

NürnbergMesse

160,000 m² hall area and 50,000 m² of outdoor space are available..

120 international trade fairs and congresses a year in Nuremberg and world wide.

Around 25.000 exhibitors (international share: 33%), 805.000 trade visitors (international share: 16%) and 315.000 consumers participate in the events of the NürnbergMesse Group every year.

Nuremberg occupies 7th place in the German exhibition hierarchy and belongs to the top ten in European comparison.

Congresses

Nuremberg is a popular congress city.

Examples of congress and conference facilities:

- **CCN CongressCenter Nürnberg** (up to 11,000 seats)
- **Meistersingerhalle** Nuremberg (2,100 seats)
- **Historic City Hall** (390 seats)
- **Nuremberg Imperial Castle** (380 seats)
- **A variety of other event venues and congress hotels**

Detailed information is available on the Internet at <http://www.nuernberg-convention.de/en/>

5. Commercial sites / commercial areas

Available commercial sites

Around 1,700 hectares of the Nuremberg settlement area are shown in the municipal development plan as commercial building land.

A selection of available sites and properties can be found at

<http://www.economy.nuremberg.de>
(menu item >Commercial real estate<)

Available floor space in buildings in Nuremberg:

Commercial areas (incl. wholesale trade)	1,900,000 m ²
Office areas	3,200,000 m ²
Production and storage areas	5,560,000 m ²
Residential areas	20,440,000 m ²

Rents and purchase prices for commercial sites and properties

Rents and purchase prices in the real estate sector vary widely and depend very much on the location and quality of the property. The "Real Estate Report" for Nuremberg provides a sound survey of the major data and prices for office areas, retail trade areas and areas for production and storage. You can order the report free of charge or download it at <http://www.economy.nuremberg.de> (menu item >Info service<).

The following table is only intended to provide a **rough guide** to real estate prices in Nuremberg and deviations are possible:

	Rent in euro per m ²	Land price in euro per m ²
Offices	4 - 12	250 – 1,250
Production	3.5 - 5	75 - 250
Logistics	2 - 4.5	75 - 250
Residential	5.8 - 9.7	280 - 630

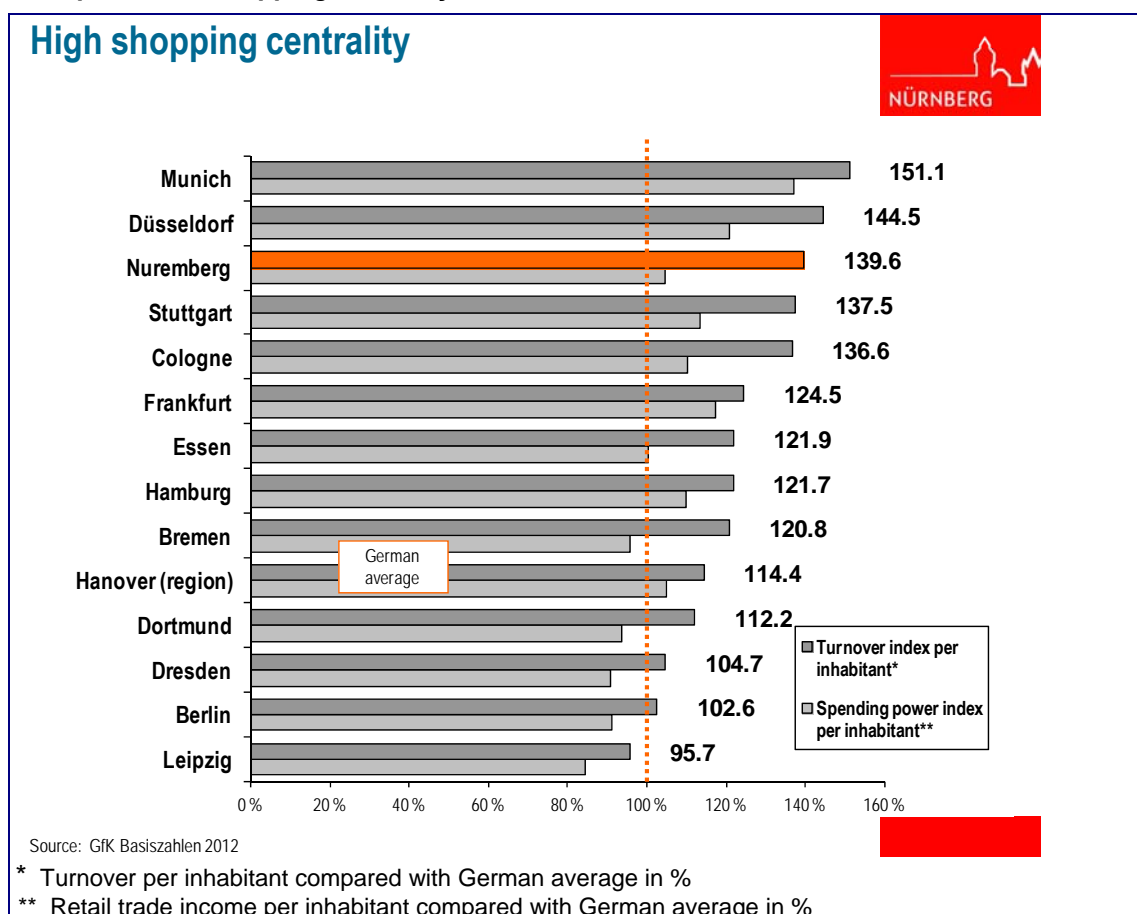
6. Retail trade sales indices

Spending power	10 600 Mio. €
Spending power index for the Nuremberg urban area referred to the total for the Federal Republic of Germany	6.479‰
Spending power index per inhabitant	104.7 (FRG = 100)
Retail trade turnover	3 542 Mio. €
Turnover index for the Nuremberg urban area referred to the total for the Federal Republic of Germany	8.636 ‰
Turnover index per inhabitant	139.6 (FRG = 100)

Source: GfK Basic Figures 2012

The shopping centrality and the retail trade turnover per inhabitant is well above average in Nuremberg compared with other German cities.

Comparison of shopping centrality



7. Labor market

The potential labor market in Nuremberg covers a large catchment area. The figures for the whole of the Nuremberg labor market district are therefore included in the calculations. The Nuremberg District Employment Office is one of the five largest in the Federal Republic of Germany and covers a total area of some 2,235 km². It includes the autonomous cities and towns of Nuremberg, Fürth, Erlangen and Schwabach and the rural districts of Nuremberg Land, Fürth, Erlangen-Höchststadt and 20 % of the rural district of Roth:

Labor market potential in February 2012		
Total of all civilian employed persons *)		648 186
Including:		
Dependent employed persons	565 802	
Men	342 026	
Women	306 160	
Young people under 25 years	21 594	
Young people 15 years of age - under 25 years	71 709	
Foreigners	76 079	
Unemployed *) in Nuremberg District Employment Office (January 2012)		35 981
Including (July 2011) :		
Manufacturing and technical professions	5 962	
Building trades	1 675	
Natural scientist, information scientist , engineers	923	
Transportation, logistics trades; security guards	8 831	
Shop staff	5 596	
Service and associated office trades	4 420	
Health service, social and educational professions	2 636	
Art and science professions	846	
Persons attending continuation training *) (January 2011)		1 588
Students		45 000
Including:		
Friedrich Alexander University Erlangen-Nuremberg	32 400	
Georg Simon Ohm University of Applied Sciences Nuremberg	10 100	

*) Source: Federal Labor Agency

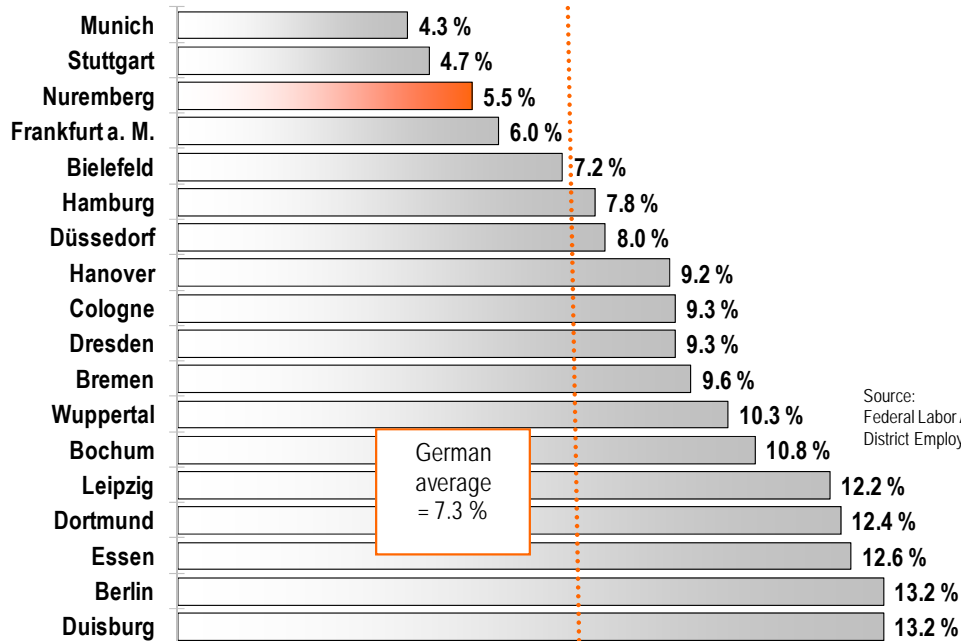
Educational structure of employees

	Share of total employment	Employees
Graduates	12.7%	33 623
Unknown training or in occupational training	14.5%	38 284
With industrial/college training	56.4%	149 056
Without completed occupational training	16.4%	43 361
Total	100.0%	264 324

Source: Federal Labor Agency; Qualification structure of employees in Nuremberg (urban district) Jul 2009

Unemployed January 2012		
District Employment Office	unemployed	35 981
	percentage unemployed	5,5 %

Percentage unemployed in January 2012 compared with other German city districts



Source:
Federal Labor Agency;
District Employment Offices

Commuters from region to City of Nuremberg



Erlangen- Forchheim-
Höchstadt- Bamberg
Remainder of commuters: 5 475

15 476

Heroldsberg - Gräfenberg -
Bayreuth
Remainder of commuters: 6 975

8 578

Fürth - Langenzenn -
Neustadt/Aisch
Remainder of commuters: 20 181

30 602

Lauf -
Hersbruck/Neuhaus -
Sulzbach-Rosenberg
Remainder of commuters: 10 387

13 425

Stein - Heilsbronn -
Ansbach
Remainder of commuters: 11 342

13 391

Feucht/Altdorf -
Neumarkt - Amberg
Remainder of commuters: 11 856

14 288

Schwabach/Wendelstein -
Roth - Weißenburg
Remainder of commuters: 15 081

19 112

Intensive commuter flows to a wide surrounding area confirm the importance of the Nuremberg labor market. 53.6 % of employees in Nuremberg are commuters.

National insurance contributors within Metropolitan Region 2007 Source: Urban Research and Statistics Office

Commuters
(including supra-regional commuters)

141 206

Remainder of commuters
(including supra-regional commuters)

93 687

Ref. date: 2009; national insurance contributors

8. Higher education establishments

There are 30 universities and universities of applied sciences with over 155,000 students (winter semester 11/12) within a radius of 100 km of Nuremberg.

Nearest university/higher education establishments

Friedrich Alexander University Erlangen-Nuremberg with 22,400 students in the following faculties:

- ⇒ School of Humanities and Social Sciences, School of Theology
- ⇒ Law School, School of Business and Economics
- ⇒ Medical School
- ⇒ School of Sciences (Biology, Chemistry and Pharmacy, Geography and Geosciences, Mathematics, Physics)
- ⇒ School of Engineering (Chemical and Bioengineering, Electrical, Electronic and Communication Engineering, Computer Science, Mechanical Engineering, Materials Science and Engineering)

Georg Simon Ohm University of Applied Sciences Nuremberg with 10,100 students in the following faculties:

- ⇒ General Sciences
- ⇒ Architecture
- ⇒ Construction Engineering
- ⇒ Business Administration
- ⇒ Electrical Engineering, Precision Engineering, Information Technology
- ⇒ Design
- ⇒ Informatics
- ⇒ Mechanical Engineering and Supply Technology
- ⇒ Social Services
- ⇒ Chemical Engineering
- ⇒ Process Technology
- ⇒ Material Technology

Other higher education establishments in Nuremberg:

Protestant University College Nuremberg

(approx. 1,100 students)

Academy of Fine Arts

(approx. 300 students)

Nuremberg Academy of Music

(approx. 360 students)

ibs International Business School Nürnberg (private)

Private school for Oekonomie & Management

Other higher education establishments within a radius of 100 km:

Universities

- Otto Friedrich University Bamberg (approx. 11,800 students)
- University of Bayreuth (approx. 11,000 students)
- Julius Maximilian University Würzburg (approx. 23,500 students)
- University of Regensburg (approx. 19,600)
- University of Eichstätt-Ingolstadt (approx. 4,700 students)

Universities of applied sciences

- University of Applied Sciences Amberg-Weiden (approx. 3,000 students)
- University of Applied Sciences Ansbach (approx. 2,400 students)
- University of Applied Sciences Coburg (approx. 4,300 students)
- Private Academy Schloss Hohenfels Coburg (approx. 150 students)
- University of Applied Sciences Hof (approx. 4,700 students)
- University of Applied Sciences for public service Dept. Hof (approx. 1,200 students)
- University of Applied Sciences Ingolstadt (approx. 3,700 students)
- University of Applied Sciences Regensburg (approx. 7,900 students)
- University of Applied Sciences Weihenstephan, Dept. Triesdorf (approx. 1.900 students)
- University of Applied Sciences Würzburg-Schweinfurt (approx. 8,600 students)

and other

9. Companies in Nuremberg

Approx. 25,000 companies and institutions are established in Nuremberg.

Some lists of companies can be found at <http://www.economy.nuremberg.de> under menu item >Business location<.

A detailed online corporate database is maintained by the Chamber of Commerce and Industry for Nuremberg and Central Franconia:

⇒ <http://www.firmen-in-bayern.de>

Great Companies in Nuremberg region



SCHNAPPT, KIR, GERÜPPE



Your Investment – perfect surroundings



THE QUALITY CONNECTION
Wire-Cable-Wiring Systems



innovation + service

10. Costs, charges and taxes in Nuremberg

For detailed information we recommend you to contact the responsible offices or companies directly. Prices are negotiable in some cases – especially for commercial customers. We cannot accept responsibility for the information given here.

Local taxes

Business tax assessment rate	447 %
Real estate tax A (for agriculture and forestry):	332 %
Real estate tax B (for other land):	535 %

Descriptions of the individual types of tax and forms can be obtained at:

- http://www.nuernberg.de/internet/referat2/steuern_abgaben.html
-

Here are the links to current prices/charges for the following utilities:

- Drinking water (<http://www.n-ergie.de/N-ERGIE/wasser-148.html>)
- Natural gas (http://www.n-ergie.de/N-ERGIE/erdgas_firmenkunden_uebersicht.html)
- Electricity (http://www.n-ergie.de/N-ERGIE/strom_firmenkunden_uebersicht.html)
- District heating (<http://www.n-ergie.de/N-ERGIE/fernwaerme-149.html>)
- Waste water (<http://nuernberg.de/internet/abwasser/glossar/abwassergebuehren.html>)
- General waste disposal (http://nuernberg.de/internet/abfallwirtschaft/gebuehren_kosten.html)

11. Gross domestic product at market prices

GDP 2009	Million €	Per inhabitant in €	Per employed person
City of Nuremberg	22 340	44 424	59 931
Nuremberg conurbation (Industrial region of Central Franconia)	46 165	35 572	61 984
Economic region (Central Franconia)	57 086	33 375	60 961
Metropolitan region*)	105 684	32 083*)	62 104*)

Source: Bavarian State Office for Statistics and Data Processing

*) 2008

Development of gross domestic product (GDP) at market prices

City of Nuremberg	Million €	Change over previous year in %
1980	8 486	.
1990	14 628	.
2000	19 433	.
2003	19 923	.
2004	21 479	7.8%
2005	20 990	-2.3%
2006	21 583	2.8%
2007	22 553	4.5%
2008	23 045	2.2%
2009	22 340	-3.1%

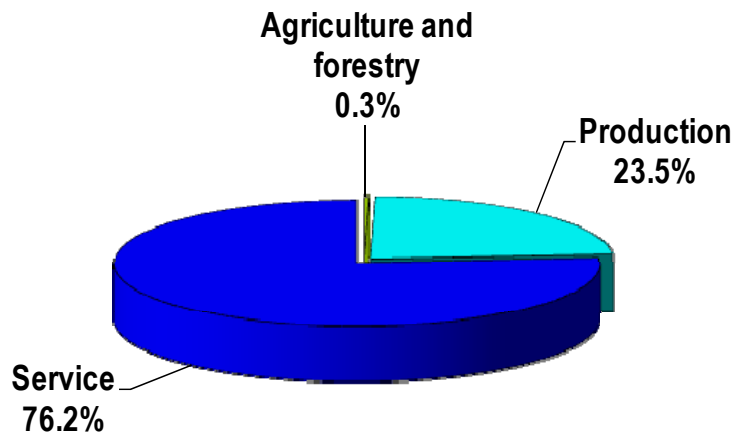
Growth of gross value creation (GVC) at manufacturing prices

City of Nuremberg	Million €	Change over previous year in %
1980	7 939	.
1990	13 746	.
2000	17 489	.
2003	51 497	.
2004	53 617	4.1%
2005	53 509	-0.2%
2006	55 287	3.3%
2007	57 509	4.0%
2008	59 312	3.1%
2009	57 086	-3.8%

Source: Bavarian State Office for Statistics and Data Processing

12. Economic structure

Structure of Nuremberg economy National insurance contributors by economic sectors



National insurance contributors at June 2010;
Source: Federal Labor Agency



Structure of Nuremberg economy National insurance contributors by economic sectors

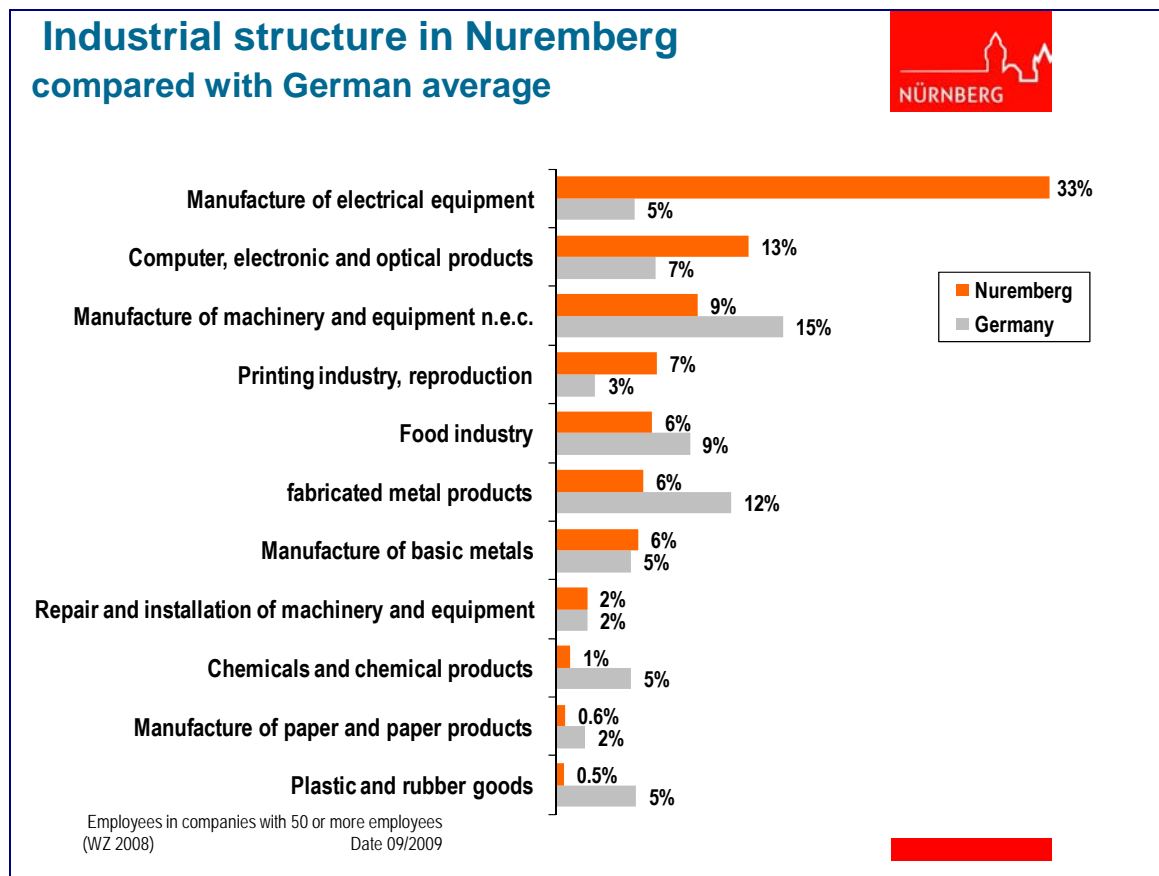


Branch	National insurance contributors	Share of total employees
A, B Agriculture and forestry, fisheries	861	0.3%
C Mining; non-metallic mineral extraction	28	0.0%
D Manufacturing industry	50 359	19.1%
E Energy and water supply	4 149	1.6%
F Building industry	7 634	2.9%
G Trade; install./repair of vehicles/commodities	36 131	13.7%
H Catering trade	7 559	2.9%
I Transport and telecommunications	20 175	7.6%
J Banking and insurance	16 983	6.4%
K Services for companies, real estate	61 366	23.2%
L Public administration etc.	17 165	6.5%
M-Q Public & private services (without admin.)	41 915	15.9%
Total	264 324	100.0%

Urban Nuremberg - employees in June 2009
Source: Federal Labor Agency



Economic structure - Industry



Industrial employees and turnover

Branch of industry	Companies Sept. 2009	Employees Sept. 2009	Total turnover 2009 (in 1000 euro)
Food industry	29	4 181	730 889
Manufacture of paper and paper products	5	264	32 423
Printing industry, reproduction	22	2 732	547 753
Chemicals and chemical products	7	477	21 237
Plastic and rubber goods	8	428	47 864
Manufacture of basic metals	6	1 276	157 025
fabricated metal products	39	1 832	57 089
Computer, electronic and optical products	23	5 285	913 470
Manufacture of electrical equipment	17	9 408	533 401
Machinery and equipment n.e.c.	26	6 237	1 252 684
Repair and installation of machinery and equipment	25	4 486	371 950
Manufacture of vehicles & parts	7	*	*
Miscellaneous	55	6 395	1 847 352
TOTAL	269	43 001	6 513 137

Industrial companies with at least 50 employees (WZ 2008)

*) Not classifiable due to data privacy protection but included in "miscellaneous"

Source: Bavarian State Office for Statistics and Data Processing published July 2010

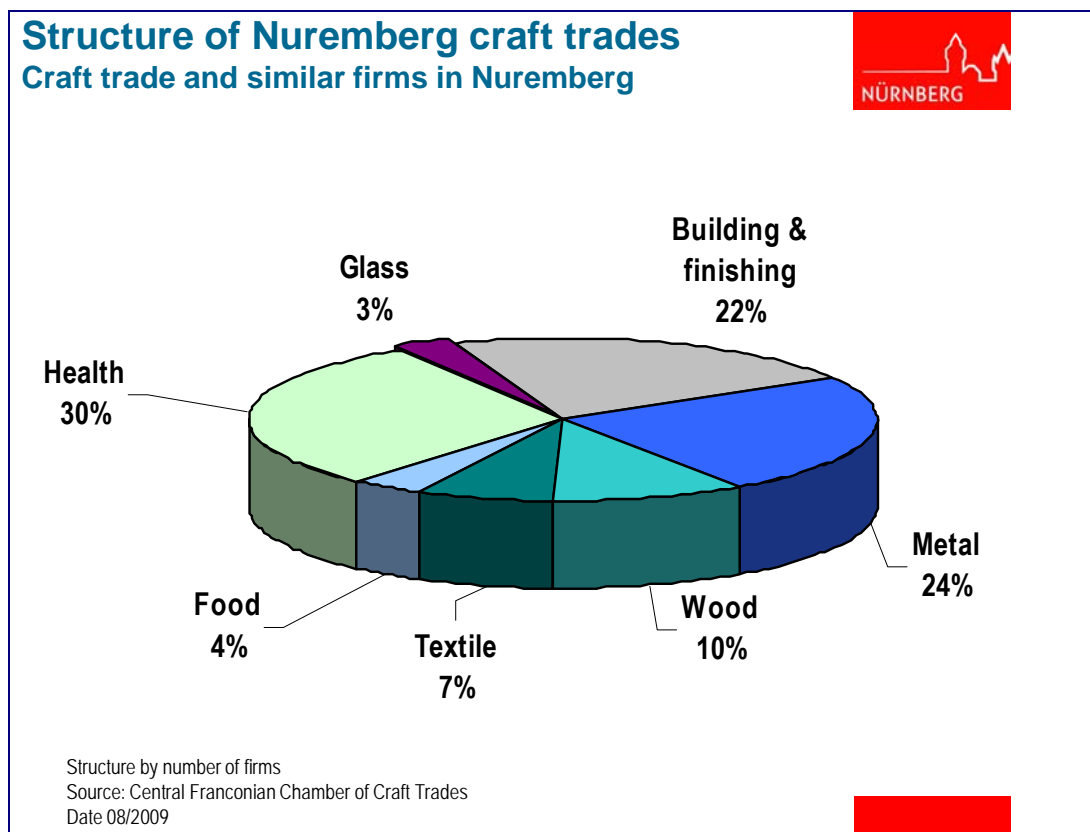
Economic structure – Craft trades

The craft trades are very important for the economic power of the region. 45,000 skilled tradesmen work in the 5,568 craft trade firms in Nuremberg. This means the craft trades account for over one sixth of the jobs in Nuremberg. Particularly the metal industry plays a key role here, which is strongly developed due to its close integration with the industrial branches of electrical engineering and mechanical engineering.

Development of craft trade and similar firms

City of Nuremberg	2002	2003	2004	2005	2006	2007	2008	2009
Number of full craft trade firms "A"	3 402	3 396	2 851	2 878	2 894	2 834	2 727	2 689
Number of full craft trade firms "B"	-	-	802	1 005	1 203	1 411	1 565	1 777
Number of similar firms	1 086	1 104	1 190	1 246	1 289	1 063	1 254	1 209
Total	4 488	4 500	4 843	5 129	5 386	5 308	5 546	5 675

Source: Central Franconian Chamber of Craft Trades



Economic structure – Service sector

National insurance contributors in Nuremberg's service segments

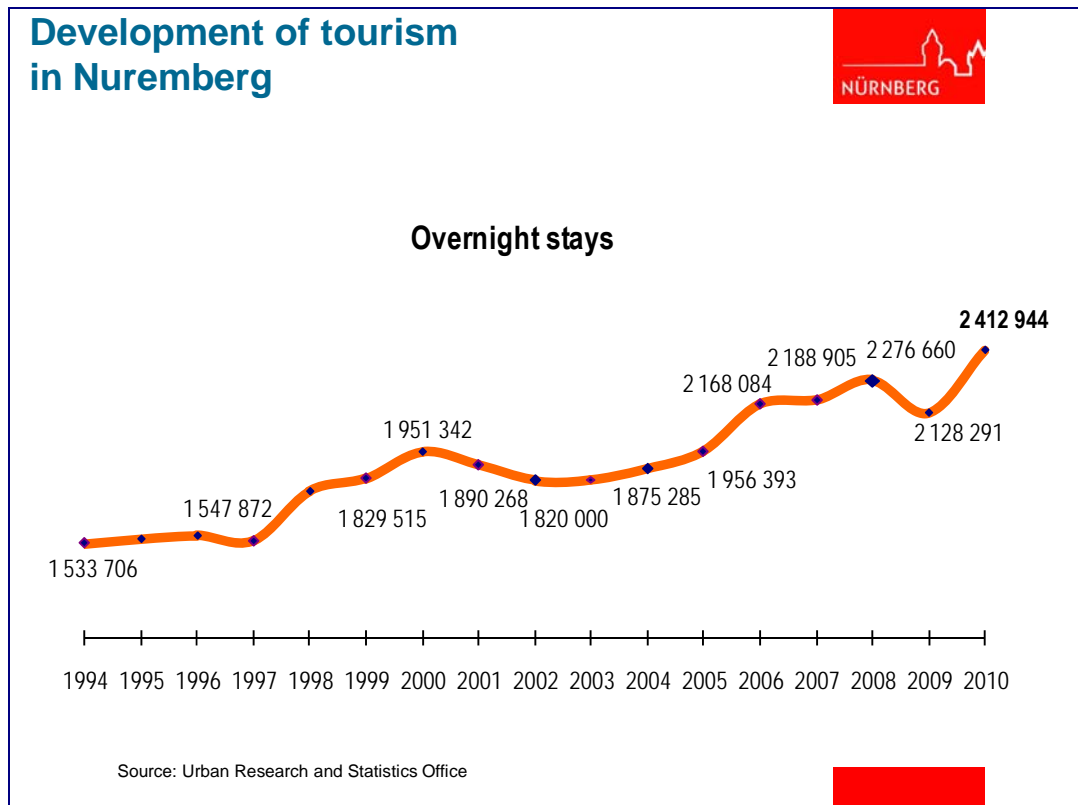
	2007	2008	2009	
Wholesale and Retail trade	36 487	36 933	36 131	17,9%
Transportation and storage	20 251	20 516	20 175	10,0%
Accommodation and food service	7 313	7 437	7 559	3,8%
Information and communication	16 765	16 337	16 171	8,0%
Financial and insurance activities	17 055	17 125	16 983	8,4%
Real estate activities	1 759	1 884	2 015	1,0%
Professional, scientific and technical activities	16 466	17 758	17 034	8,5%
Administration and support service	26 853	28 470	26 146	13,0%
Public administration, compulsory social security	16 313	16 745	17 165	8,5%
Education	5 695	4 899	5 625	2,8%
Human health and social work	22 219	22 866	23 087	11,5%
Arts, Entertainment and recreation	1 628	1 679	1 720	0,9%
Other service activities	9 553	9 964	11 234	5,6%
Activities of households as employers	235	219	241	0,1%
Extraterritorial organizations	12	11	7	0,0%
Total Service sector	198 604	202 843	201 293	100%
Total of all national insurance contributors	262 680	268 000	264 324	

Source: Federal Labor Agency WZ08
National insurance contributors in the service sector in Nuremberg

Economic structure - Tourism

Figures for 2010

- Beds: 14 990
- Number of visitors: 1 336 578
- Number of overnight stays: 2 412 944
- Room utilization: 53.5% (smaller hotels) - 63.6% (hotels >100 beds);
- Average bed utilization: 41.9 % (38.5 % previous year)



13. “Soft” location factors

We have compiled detailed information on living conditions in Nuremberg at <http://www.economy.nuremberg.de> under menu item <Living in Nuremberg>. Nuremberg is rated 24th in terms of quality of life in a comparison of 221 important cities throughout the world.

Environmental conditions - In a comparison of environmental conditions in 218 important cities throughout the world, Nuremberg shares 17th place with Bern, Copenhagen and Boston.

Living - Dream homes can still become reality relatively easily and at attractive prices in Nuremberg.

Education - Nuremberg offers a full range of educational facilities based on the Bavarian school system, which is one of the best systems in Germany. These include schools, training institutions, the Friedrich Alexander University Erlangen-Nuremberg, the Georg Simon Ohm University of Applied Sciences and the Protestant University College, which train young people at a high standard.

Leisure - The green belt and river meadows through the middle of the city or the spacious parks and lakes offer ideal opportunities for relaxation. 500 sports clubs in the conurbation provide an attractive leisure program. Whether grand opera or minor arts and cabaret, gallery visit or museum tour – the active art and cultural scene in Nuremberg is a constant source of new surprises and inspiration. Thanks to many creative and cosmopolitan restaurateurs, there is probably no region in the world that is not represented on the culinary scene in Nuremberg. Franconian cuisine has a long tradition – the original Nuremberg fried sausage, the “Schäufele” roast shoulder of pork or “Aischgrund” carp have their fans all over the world. Incidentally, with 330 breweries Franconia is the region with the highest concentration of breweries in the world...

Shopping - You can really enjoy shopping in Nuremberg, which has one of the largest pedestrian malls in Europe. Nuremberg as a shopping city has its own typical flair.

Health & social services – Nuremberg’s hospital - the biggest municipal hospital in Germany – is equipped for the maximum level of care and provides the highest standard of treatment and care for the region’s population. The number of practicing medical specialists and general doctors per inhabitant is above the Bavarian and German average. Nuremberg offers above-average nursery school facilities.

Cost of living - The cost of living in Nuremberg is comparatively low.

Safety - A comparison of cities with more than 300,000 inhabitants shows that Nuremberg is one of the safest of the large German cities.

Brief profile of Nuremberg economic region

- One of the 10 large economic regions in Germany
- Population
 - in Nuremberg urban area 508,000
 - in economic region (Central Franconia) 1.7 million
 - in metropolitan region 3.5 million
- Working population of -1,8 Mio. in the metropolitan region
- Regional gross domestic product 106 billion euro (metropolitan area)
- One of the most important German transport hubs:
 - International airport
 - Located at the intersection of for major motorways
 - Railway junction for ICE and international long-distance routes
 - Main-Danube Canal with biggest freight terminal in Southern Germany
- Center of the third largest integrated local transport system in Germany
- International exhibition venue
- Industry successful in international markets with regional export quota 42 %
- Dynamic growth in trade with Central Eastern and Eastern Europe. Gateway region to the new EU member states
- Second most important region in Bavaria for higher education and research
- Top position among the European technology regions, especially in microelectronics, communication and information technology, mechatronics, transport and logistics, medical technology and optical data transmission
- One of the leading innovation regions; holds 4rd place Germany-wide for the number of patent registrations per inhabitant
- Main branches of industry: mechanical engineering, electrical engineering/electronics, printing, radio broadcasting/telecommunications, medical technology, control & instrumentation, writing utensils
- Strong growth in service sector; key areas in engineering and business consulting, market research, facility management and e-commerce
- High quality of life (according to a study by W. M. Mercer: 24th place among 221 cities worldwide)
- One of the safest large German cities

Services offered by the Office for Economic Development

The team at the Office for Economic Development is your contact within the city administration and is pleased to help you with all business matters. Use the services provided by the city's business promotion team.

⇒ **RATHAUS DIREKT**

If you as a company have a request and need assistance from the Nuremberg authorities, then we are your main point of contact. We help with your questions on building, planning and environmental legislation. To save you time visiting all the departments, we coordinate the necessary procedures and take care of the work for you centrally at cross-departmental level. We advise and support you if you wish to settle your company in the Nuremberg business location. We do this by providing information about private or municipal commercial sites and properties and briefing you on public financial aid. If you are looking for a new location for your company or want to relocate or expand your present facility, we are here to help you. We initiate and support practical employment and training projects when companies need to cope with change processes or technological development demands new qualifications.

⇒ **Innovation promotion and location marketing**

We support regional competence initiatives and promote cluster creation by setting up a network. For this purpose we wish to settle research institutions in Nuremberg, develop research activities and intensify the regional networking of research and industry. An important aid here is the setting up of communication platforms. In the field of technology and market development we initiate and accompany projects of a pilot nature. We provide information in the search for project partners, arrange development aid and help you to submit applications. We inform you about the possibilities of obtaining public financial aid.

We compile individually tailored packages of the most important information on the Nuremberg business location for companies interested in Nuremberg. We provide location analyses, particularly industrial, technological and structural analyses. We support studies on the business location and business development and scientific works that examine the Nuremberg location. We carry out location marketing and press and public relations work relevant to business.

www.economy.nuerenberg.de

Index

- airport 5
- altitude 4
- area 4
- assessment rate 15
- available commercial sites 7

- bed utilization 21
- building land 7

- charges 15
- commercial areas 7
- commercial sites 7
- commuters 3, 11
- Commuters 11
- companies 14
- CongressCenter Nürnberg 6
- congresses 6
- conurbation 3
- corporate database 14
- cost of living 22
- costs 15
- craft trades 19

- District Employment Office 9
- district heating prices 15
- doctors 22
- drinking water 15

- economic region 3
- economic structure 17
- education 22

- educational structure 10
- electricity prices 15
- employees 3
- environmental conditions 22
- exhibition center 6
- exhibitors 6
- export quota 3

- floor space in buildings 7

- GDP 16
- general waste disposal 15
- geographic location 4
- Gewerbesteuer 15
- gross domestic product 3, 16
- gross value creation 16
- GVC 16

- health 22
- higher education establishments 12
- hospital 22

- industrial employees 18
- industrial turnover 18
- industry 18
- inhabitants 3

- labor market 9
- leisure 22
- living 22
- local public transport 5

- local taxes 15
- location 4

- Main Danube Canal 5
- major roads 5
- Meistersingerhalle 6
- motorway slip roads 5
- motorways 5

- national insurance contributors 3
- natural gas prices 15
- NürnbergMesse 6
- nursery school 22

- office areas 7
- overnight stays 21

- percentage unemployed 10
- potential labor market 9
- prices 15
- production areas 7
- purchase prices 7

- rail connections 5
- Real Estate Report 7
- real estate tax 15
- remainder of commuters 3, 11
- rents 7
- residential areas 7
- retail trade turnover 8
- road network 5

- safety 22
- sales indices 8
- schools 22
- seats 6
- self-employed 3
- service sector 20
- shopping 22
- shopping centrality 8
- sites 7
- soft location factors 22
- spending power 8
- spending power index 8

- taxes 15
- tourism 21
- trade visitors 6
- transport connections 5
- turnover index 8

- unemployed 10
- university 12
- university of applied sciences 12

- waste charges 15
- waste water charges 15
- water prices 15
- working population 3

If you can't find the data you are looking for here, please contact us at any time – we will try to help you. We would also like to hear from you if you have any suggestions or criticism.

Your contact at the city authorities for all business and location questions:

Stadt Nürnberg

Amt für Wirtschaft

Theresienstr. 9

90403 Nürnberg

☎ +49 (0) 911/ 231 -28 03 or -29 98

Fax: +49 (0) 911/ 231 -85 25

E-mail: economy@stadt.nuernberg.de

Internet : <http://www.economy.nuremberg.de>