

# Nuremberg

## Facts & Figures

518457393206842739054  
195678423579468451357  
195678423123485167265946314789557946845135  
568795235697412586321  
671984615324587945639

2011



## City Area

Location: 11°04'43" East, 49°27'20" North <sup>1)</sup>  
Heights: main station 309 m, castle hill 352 m,  
lowest point 284 m, highest point 407 m

Extent: North-South 23.5 km  
East-West 21.4 km

1) Old City Hall

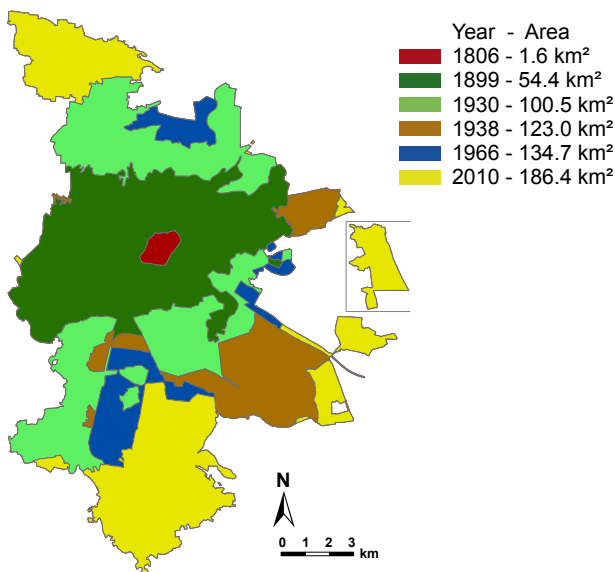
## Land Use

2009

Surface area: 186.4 km<sup>2</sup>

buildings and enclosed areas	35.9 %
agriculture	22.4 %
transport	17.4 %
woods	16.1 %
leisure and recreation	4.4 %
water	2.2 %
other	1.6 %

## Evolution of City Area since 1806

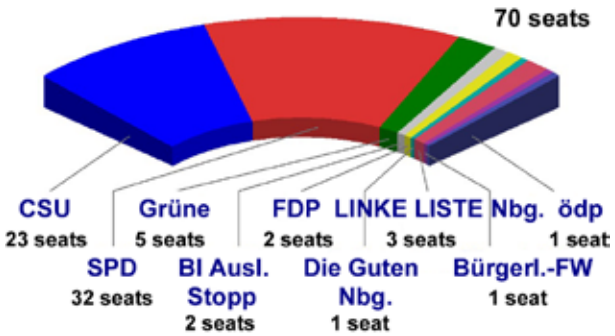


## Evolution of Population since 1431

Year	Population	Year	Population
1431	22 797	1946	312 338
1662	40 276	1956	426 858
1806	25 176	1972	514 976
1852	53 638	1985	465 255
1900	261 081	2000	488 400
1939	423 383	2009	503 673

## Political Representation

Council Election 2008



Lord Mayor Dr. Ulrich Maly (SPD)

2nd Mayor Horst Förther (SPD)

3rd Mayor Dr. Klemens Gsell (CSU)

## Twin Cities

City	Country	since
Antalya	Turkey	1997
Atlanta	USA	1998
Córdoba	Spain	2010
Glasgow	Scotland	1985
Hadera	Israel	1986
Kavala	Greece	1999
Kharkiv	Ukraine	1990
Kraków	Poland	1979
Nice	France	1954
Prague	Czech Republic	1990
San Carlos	Nicaragua	1985
Shenzhen	China	1997
Skopje	Republic of Macedonia	1982

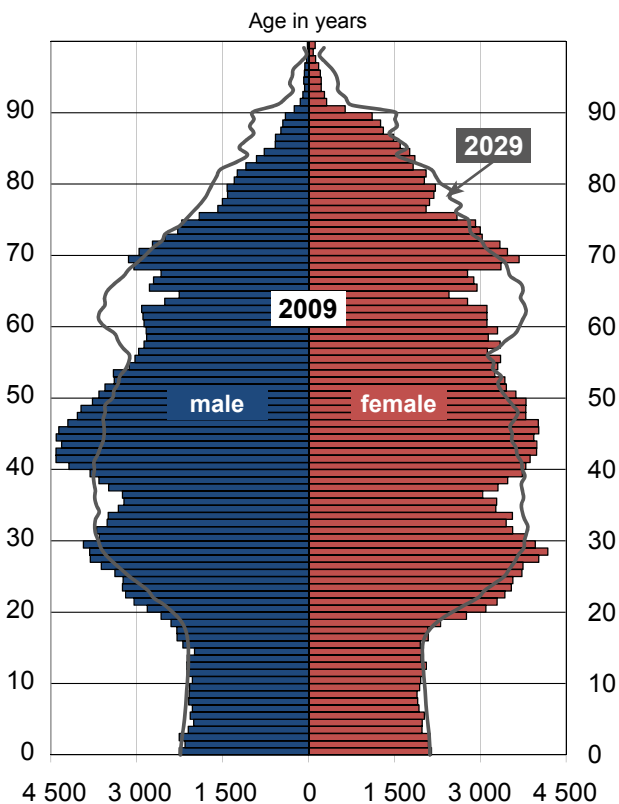
## Nuremberg International Human Rights Prize

Recipient, Country	Year
Sergej Kowaljow, Russia	1995
Abe J. Nathan, Israel und Khémaïs Chammari, Tunisia	1997
Fatimata M'Baye, Mauritania	1999
Bischof Samuel Ruíz García, Mexico	2001
Ibn Abdur Rehman, Pakistan und Teesta Setalvad, India	2003
Tamara Chikunova, Uzbekistan	2005
Eugénie Musayidire, Rwanda	2007
Abdolfattah Soltani, Iran	2009

Population Structure (in %) <sup>2)</sup>		2006	2010
Proportion of population	total	<b>100</b>	<b>100</b>
by gender	male	48.1	48.2
	female	51.9	51.8
by marital status (18+)	unmarried	29.8	31.4
	married	51.6	49.9
	widowed	8.9	8.5
	divorced	9.7	10.2
by religious affiliation	Protestant	33.7	31.9
	Catholic	29.1	27.6
	other, none	37.2	40.5
by age	under 6	4.8	5.0
	6-14	7.4	7.3
	15-24	11.4	11.3
	25-34	14.5	14.9
	35-64	41.6	40.9
	65-74	11.4	11.2
	75+	8.9	9.4

2) registered population, reference date: December 31

### Population by Age 2009 and Population Projection 2029

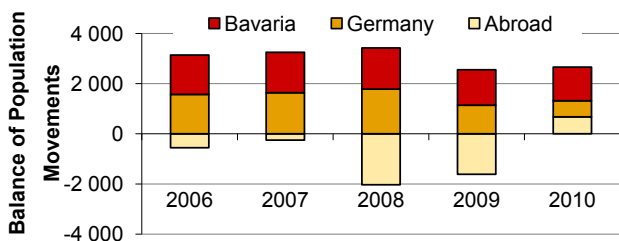


<b>Population Structure <sup>3)</sup></b>	<b>2006</b>	<b>2010</b>
<b>Resident Population by Nationality</b>		
German (in %)	82.4	82.9
Non-German (in %)	17.6	17.1
from a total of ... countries (total)	148	158
Residents with immigrant background (in %)	.	39.1
<b>Non-Germans by Nationality (in %)</b>		
EU-Memberstates (EU-27)	34.2	35.1
a.o. Greece	10.6	9.6
Italy	6.9	6.8
Poland	4.5	4.6
Romania	2.1	3.4
Turkey	23.2	22.6
Ukraine	6.0	5.3
Russia	4.0	3.8
Croatia	4.1	3.8
Bosnia-Herzegovina	2.8	3.0
Iraq	3.5	2.8

<b>Households <sup>3)</sup></b>	<b>2006</b>	<b>2010</b>
total	259 852	262 394
1-person (in %)	48.2	48.7
2-person (in %)	28.8	29.0
3 or more person (in %)	23.0	22.2
with children (in %)	18.2	17.8
of which single parent households (in %)	4.4	4.5

<b>Population Movements <sup>4)</sup></b>	<b>2006</b>	<b>2010</b>
Births	4 267	4 524
Deaths	5 419	5 336
Immigration to Nuremberg	28 406	29 162
Emigration from Nuremberg	25 822	26 505
Internal migration within Nuremberg	38 672	37 879
Marriages	2 057	2 241

### Net Gains and Losses with respect to Bavaria, Germany and Abroad



3) reference date: December 31

4) 2010: preliminary figures

## Education

General education 2009/10	Number of schools	Number of students
Grundschule (grades 1 to 4)	57	15 863
Hauptschule (grades 5 to 9 + voluntary 10th grade)	29	8 281
Förderschule (school for pupils with special needs; grades 1 to 10)	15	3 065
Realschule (grades 5 to 10)	10	5 892
Gymnasium (grades 5 to 12)	15	13 717
Other Schools (grades 5 to 12)	2	1 081
Abendrealschule, Abendgymnasium and Kolleg (secondary evening schools, 1 to 4 years)	3	1 124
Vocational education 2009/10	Number of schools	Number of students
Berufsschule (part-time vocational school; 1 to 3.5 years; grades 10 to 12)	12	19 494
Berufsfachschule (full-time vocational school; 1 to 3 years; grades 10 to 12)	30	2 222
Other vocational schools	45	8 705
Higher education 2009/10	Number of institutions	Number of students
Colleges of Applied Sciences	2	9 561
Academies of Art and of Music	2	680
University	1	6 363
Nuremberg Centre for Adult Education		2009
Double periods		68 985
Participants		174 965
Nuremberg Public Library		2010
Participants		899 190
Media loaned		2 276 202
Media inventory		907 858



Photo: Marriage Carousel,  
Sieglinde Wild

**Culture and Sport****2010**

Cultural Facilities/ Venue	Performances/ Events	Visitors
State Theatre Nürnberg <sup>5)</sup>	643	240 113
Meistersingerhalle	776	337 945
easyCredit Stadium	143	798 527
of which special/third-party events	108	96 881
football matches 1.FCN	35	701 646
Arena	97	398 000
Nuremberg Zoo		933 880
City Museums		525 376
of which Toy Museum		110 581
Albrecht Dürer House		61 573
City Museum Fembohaus		34 790
Germanisches Nationalmuseum		405 799
German Railway Museum		190 400
Imperial Castle		156 387
Neues Museum - State Museum for Art and Design		77 230
Cinemas		2 013 496

5) Season 2009/10



Photo: Hospital of the  
Holy Spirit,  
Christine Dierenbach

**Health****2009**

Hospitals	15
Hospital beds	3 431
Doctors in hospitals	1 118
Doctors in private practice	1 148
of which specialists	972
of which general practitioners	211
Dentists	455
Public pharmacies	146

## Children's Day Care 2010

Day nurseries	31
Kindergartens	181
School afternoon supervision	86
Mixed age facilities	105
caring for children aged	
under 3	1 651
from 3 to 6	10 883
from 6 to 11	6 322
from 11 to 14	220

## Care for Elderly People 2008

Nursing Homes	Number	57
	Places	7 471
Residential Homes		6 614
Staff		3 763
of which part-time staff		1 943

## Social Security

### Basic Social Security Benefits for Job-seekers Juni 2010

Recipients of unemployment benefit (only SGB II)	37 156
Recipients of „social money“ (children and handicapped)	14 243

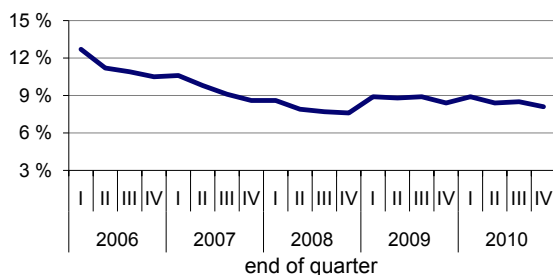
### Recipients of Social Benefits 2009

Regular subsistence payments	1 980
Basic security payments in old age and in cases of reduced earning capacity	6 715
Assistance in special situations (benefits according to chapter 5 to 9 of SGB XII)	6 394

## Labour Market Annual Average 2010

	Germany	Bavaria	Nuremberg
Unemployment rate (in %)	7.7	4.5	8.5
Unemployed persons	3 244 470	299 610	22 441
of which female (in %)	45.7	46.3	47.1
non-German (in %)	15.5	18.7	33.1

### Evolution of Unemployment Rate in Nuremberg <sup>6)</sup>



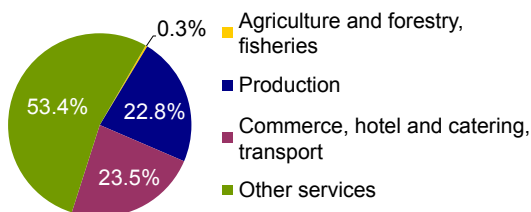
6) in May 2009: Change of labour market programmes



**Employment****Juni 2010**

Employees liable for social security contributions	264 515
of which female	121 342
apprentices	14 594

**Employment by economic sector  
June 2010**

**Economy****2004****2008**

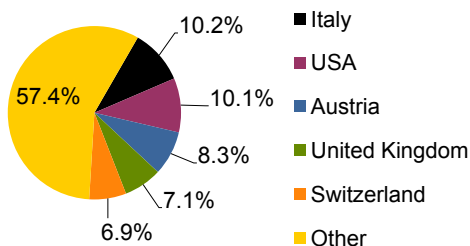
Gross value added (million €)	19 415	21 069
of which		
production sector (in %)	26.8	26.1
service sector (in %)	73.0	73.7
Disposable per capita income (€)	17 952	19 066

**Exhibition Centre****2006****2010**

Events	Number	139	111
	Visitors	1 193 408	1 195 870
of which visitors to			
Consumenta		174 563	144 675
Leisure Fair Nuremberg		150 002	109 956
International Toy Fair		80 224	76 637
World Organic Trade Fair <sup>7)</sup>		37 426	43 669

**Tourism****2006****2010**

Hotels, guest houses	143	154
Beds	13 951	16 110
Guests	1 145 573	1 336 578
of which guest from abroad	356 677	374 583
Overnight stays	2 129 507	2 412 944
of which guest from abroad	702 333	719 922

**Guests from abroad 2010**

7) since 2007 together with Vivaness

Construction and Housing	2005	2009
--------------------------	------	------

Completed Constructions (new buildings only)		
--	--	--

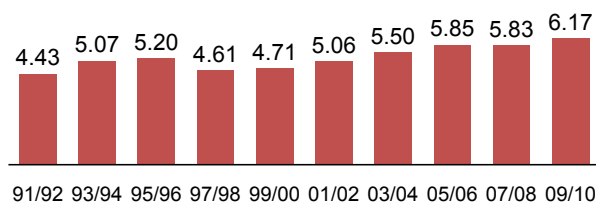
Residential buildings	381	362
of which one-family and two-family houses	331	292
Residential units	957	1 042

Housing Stock		
---------------	--	--

Residential buildings	67 105	68 885
of which one-family and two-family houses	44 091	45 596
apartment buildings	23 014	23 289
Apartments in residential buildings	255 964	260 125
of which apartment in one-family and two-family houses	51 720	53 278
flats in apartment buildings	204 244	206 847
Floor space per person (in m <sup>2</sup> )	37.8	38.5
Residents per apartment	2.0	1.9

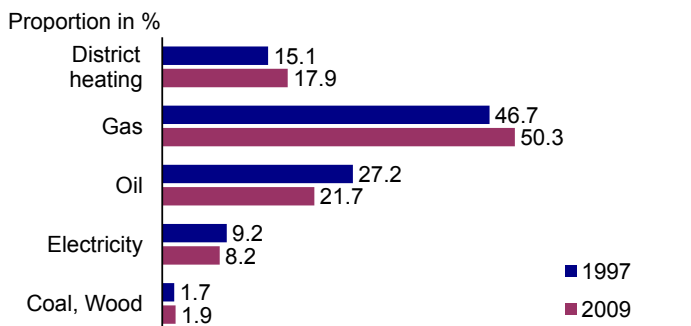
Evolution of Net Rents exclusive of Heating		
---	--	--

Average net rent exclusive of heating (in Euro per m<sup>2</sup>)



Heating		
---------	--	--

Modes of heating



<b>Energy and Water Supply</b>	<b>2006</b>	<b>2010</b>
Electricity (1 000 kWh)	2 989 241	3 226 946
Gas (1 000 kWh)	7 887 393	6 364 754
District heating (1 000 kWh)	1 199 364	1 377 496
Water (1 000 m <sup>3</sup> )	30 558	28 971

<b>Immissions</b>	<b>2006</b>	<b>2010</b>
<b>Measured at Nuremberg Main Station</b>		
<b>Annual Averages</b>		
Sulphur dioxide SO <sub>2</sub> (mg/m <sup>3</sup> )	0.005	0.003
Carbon monoxide CO (mg/m <sup>3</sup> )	0.4	0.4
Nitrogen oxide NO (mg/m <sup>3</sup> )	0.030	0.028
Nitrogen dioxide NO <sub>2</sub> (mg/m <sup>3</sup> )	0.046	0.040
Particle emissions PM <sub>10</sub> (µg/m <sup>3</sup> )	30	27

<b>Climate</b>		<b>2010</b>
Average air temperature	(in °C)	8.4
	deviation from norm <sup>8)</sup>	-0.4
Precipitation	(in mm)	713.2
	percentage of norm <sup>8)</sup>	110.7
Sunshine	(in hours)	1 576.4
	percentage of norm <sup>8)</sup>	92.8

8) Norm = long-term mean value Nuremberg Airport 1961-1990

<b>Transport</b>	<b>2006</b>	<b>2010</b>
<b>Airport</b>		
Starts and landings	78 048	70 778
Passengers	3 965 878	4 073 819
Air freight (in t)	14 167	9 679

<b>Harbour</b>		
Ship arrivals	548	561
Freight turnover (in t)	11 306 321	15 001 287

<b>Roads within City Limits</b>		
Total length (in km)	1 143	1 144
of which municipal roads (in km)	1 001	999

<b>Motor Vehicles</b>		
Registered motor vehicles	289 077	268 939
of which saloons and station wagons	245 560	226 687

<b>Public Transport</b>		
Passengers (in 1 000)	212 368	242 285
Length of route network (in km)	458.3	571.4
Stops	624	602

City	Area in km <sup>2</sup>	Population	Non- Germans (in %)	Unem- ployed (in %)	Motor vehicles (per 1 000 inhabi- tants)
<b>Nuremberg</b>	<b>186.37</b>	<b>503 673</b>	<b>16.4</b>	<b>8.7</b>	<b>515</b>
Berlin	891.54	3 442 675	13.7	14.1	374
Hamburg	755.30	1 774 224	13.5	8.6	464
Munich	310.42	1 364 194	22.6	6.0	503
Cologne	405.16	998 628	17.2	10.6	488
Frankfurt a.M.	248.31	679 571	24.3	8.3	503
Stuttgart	207.35	601 646	22.7	6.4	512
Düsseldorf	217.21	587 185	17.3	9.6	526
Dortmund	280.40	576 824	12.5	13.2	487
Essen	210.31	572 624	10.1	12.3	550
Bremen	235.46	547 685	12.7	11.1	457
Leipzig	297.35	518 862	6.2	15.1	420
Dresden	328.31	517 052	3.9	11.6	446
Hannover	204.14	510 809	14.1	9.3	438
Regensburg	80.70	134 218	10.7	7.2	647
Würzburg	87.63	133 195	12.5	5.8	519
Ingolstadt	133.35	124 259	13.3	4.8	726
Fürth	63.35	114 044	12.7	8.0	549
Erlangen	76.94	105 554	14.7	4.4	598

Published by Stadt Nürnberg  
 Amt für Stadtforschung und Statistik  
 für Nürnberg und Fürth  
 Unschlittplatz 7a  
 90403 Nürnberg

Phone: +49 (0)911 231-2843  
 Fax: +49 (0)911 231-2844  
 Internet: [www.statistik.nuernberg.de](http://www.statistik.nuernberg.de)  
 E-Mail: [statistikinfo@stadt.nuernberg.de](mailto:statistikinfo@stadt.nuernberg.de)  
 Printed by: Duckerei Rumpel oHG

This publication draws on statistics from City of Nuremberg local censuses, the Bavarian State Office of Statistics and Data Processing, the German Federal Labour Agency and various other sources.

© Copyright for the pictures: Stadt Nürnberg, Press and Information Office; Reproduction of the folder in total or in parts is permitted with a quotation of the sources.

Published in April 2011



Nürnberg  
 Amt für Stadtforschung und Statistik